



2009 IN REVIEW: HARLEM RBI SUPPORTERS COME THROUGH IN THE CLUTCH

The last thing East Harlem families need to concern themselves with in times of economic uncertainty is whether or not their child's after-school or summer program is in jeopardy. Thanks to your generosity and the fiscal responsibility and foresight of our organization in 2009, Harlem RBI and DREAM Charter School parents once again had a safe and secure place for their children to play, learn and grow.

In a year of unprecedented challenges, Harlem RBI held strong fiscally and programmatically. Thanks to careful budget monitoring and a significant increase in board contributions in Fiscal Year 2009, Harlem RBI actually increased the number of youth slots in its programs and the integrity of the Harlem RBI mission stayed firm. As a result, our youth continue to achieve amazing results. The class of 2009 experienced high college acceptance rates and started classes this fall; the nationally-recognized REAL Kids Summer Program grew to serve a record 343 participants; the organization received first-ever grants from the Starr International and Teagle Foundations, and our annual gala, Bids for Kids, raised a record \$1.57 million for the children and families

of East Harlem. And of course, DREAM Charter School completed a spectacular inaugural year with 100 kindergarten and first grade students. Not bad work in a time of crisis.

And we won't be slowing down in 2010. As part of Harlem RBI's work to make its presence in East Harlem permanent, the organization is launching a capital planning campaign to find a joint home for both Harlem RBI and DREAM. An ambitious goal, to be sure, but as we have learned this year, Harlem RBI is strong enough to grow in any time, no matter what the challenge.

We hope you will enjoy the many accomplishments shared here in our first ever Annual Report, that will now replace our twice annual management reports. As always, we welcome your feedback. On behalf of the staff and families of Harlem RBI, thank you for your unwavering support.

— Richard A. Berlin, *Executive Director*

VISIT US AT WWW.HARLEMRBI.ORG
TO LEARN HOW YOU CAN CHANGE THE LIFE
OF A YOUNG PERSON TODAY.

FY2009 ANNUAL REPORT HIGHLIGHTS

HARLEM RBI

- STRATEGIC PLAN UPDATE 2
- PROGRAM EVALUATION RESULTS 3
- PROGRAMS UPDATE 4
- FINANCIAL REPORT 6
- DEVELOPMENT REPORT 6
- BOARD OF DIRECTORS REPORT CARD 12

DREAM CHARTER SCHOOL

- PROGRAM UPDATE 5
- FINANCIAL REPORT 7

HARLEM RBI AND DREAM CHARTER SCHOOL

- SUPPORTERS 8-11

HARLEM RBI STAFF UPDATE

RICHARD SOUTO NAMED CHIEF OPERATING OFFICER



In June 2009, Harlem RBI welcomed Richard Souto as Chief Operating Officer of the organization. Rich oversees Harlem RBI's programs, finance and operations departments, as well as Harlem RBI's partnership with DREAM Charter School. Rich comes to Harlem RBI from New Heights Youth where he served as Executive Director and Ground Work where he was Associate Director for five years. Rich is also an Adjunct

Professor at the Milano Graduate School for Management and Urban Policy of the New School University. Rich received a B.S. from Boston University, an MBA from Baruch College of the City of New York and completed the Columbia University Institute for Non-Profit Management Executive Level Program. Harlem RBI looks forward to seeing Rich's expertise impact the organization.

HARLEM RBI STRATEGIC PLAN UPDATE

VISION FOR SUCCESS

In 2007, Harlem RBI launched its third strategic planning process. The plan identified five primary strategic goals and 15 subsequent initiatives (read the Strategic Plan at www.harlemrbi.org/reports.html) that will guide the organization's work through 2012 and ensure the organization's growth and success. Despite the economic challenges of the past year, Harlem RBI continues to make progress toward its long term vision.

HARLEM RBI ACTION PLAN

	STATUS
1. Ensure that Harlem RBI reaches families who cannot afford other similar programs.	Delayed
2. Increase and improve social work supports, family engagement and community relations efforts.	In-Process
3. Codify policies, procedures and tools across Harlem RBI's work areas.	In-Process
4. Incorporate evaluation methods into all Harlem RBI programs.	Completed
5. Use metrics to regularly inform program management and operations.	In-Process
6. Acquire additional space (~5,000 sq ft) to accommodate growth.	In-Process
7. Share programming in selected areas between the after-school programs and DREAM.	Completed
8. Execute a single fundraising plan for the after-school program and DREAM.	Completed
9. Develop a shared back office to upgrade capacity in areas such as finance and IT.	Completed
10. Establish the structure of governance and management to oversee the combined organization.	Completed
11. Expand the summer program for elementary school children.	Completed
12. Provide services to Harlem RBI's "alumni".	In-Process
13. Extend REAL Kids to 2nd grade.	Completed
14. Periodically scan for new opportunities.	In-Process
15. Establish a process for assessing Harlem RBI's readiness when opportunities arise.	Delayed

NEW INITIATIVES AND ACHIEVEMENTS

In a year that saw many service cuts, Harlem RBI successfully maintained the high quality of its programs and even expanded some opportunities for its youth.

- More than 650 youth played on a baseball or softball team in the summer of 2009.
- REAL Kids Summer Program expanded from 300 to 343 youth.
- Harlem RBI was a finalist for the MetLife After-School Innovators Award for recruiting and retaining teenage youth.
- Harlem RBI created job opportunities for its youth by employing 24 alumni as summer learning coaches.
- Harlem RBI youth traveled to St. Louis, Missouri, to represent the organization at the RBI National All-Star Games.
- Harlem RBI's Teen Life Center increased its service capacity from 164 youth to 178 youth.

SPOTLIGHT

TEAGLE FOUNDATION FUNDS "HARLEM RBI UNIVERSITY" AT OLD WESTBURY

As part of a new three-year grant from the Teagle Foundation, Harlem RBI brought 25 rising seniors to a five-day retreat at the State University of New York at Old Westbury in June 2009. Through the "Harlem RBI University" program, students attend ten weeks of pre-residence activities before traveling to the Old Westbury campus, where they participate in resource workshops and an "Ethics of Engagement" seminar. Participants also develop family history projects with the assistance of Old Westbury professors, who visit East Harlem to continue the students' engagement in the program.

PROGRAM EVALUATION RESULTS 2008-2009

PROGRAM	AGES SERVED	NUMBER OF YOUTH SERVED	KEY RESULTS
Rookie League	6 to 8	120	NA
REAL Kids After-School	9 to 12	70	<ul style="list-style-type: none"> • 74% attendance • 98% of youth improved their focus and ability during Independent Reading Time • 96% of youth improved their ability to retell or give a clear summary of what they read
REAL Kids Summer	9 to 12	343	<ul style="list-style-type: none"> • 84% attendance • 77% of youth showed no summer learning loss • 93% of youth reported that REAL Kids helped them enjoy reading more
TeamBuilders	13 to 14	64	<ul style="list-style-type: none"> • 87% summer attendance • 65% school year attendance • 88% of youth reported that their experience in TeamBuilders will help them transition to high school successfully • 84% of youth reported that their experience in TeamBuilders will help prepare them for college
TeamWorks	15 to 16	64	<ul style="list-style-type: none"> • 95% summer attendance • 75% school year attendance • 92% of TeamWorks youth reported that the program will help them get to college • 94% of youth reported that their participation in TeamWorks will help them secure a job in the future
DreamWorks	17 to 18	64	<ul style="list-style-type: none"> • 82% of eligible youth (those who entered the school year as high school seniors) were accepted to college • Harlem RBI senior class averages 5.8 years in Harlem RBI programs
Teen Life Center	13 to 18	178	<ul style="list-style-type: none"> • Harlem RBI's Social Work Services served 59 youth through individual counseling and 119 through group counseling

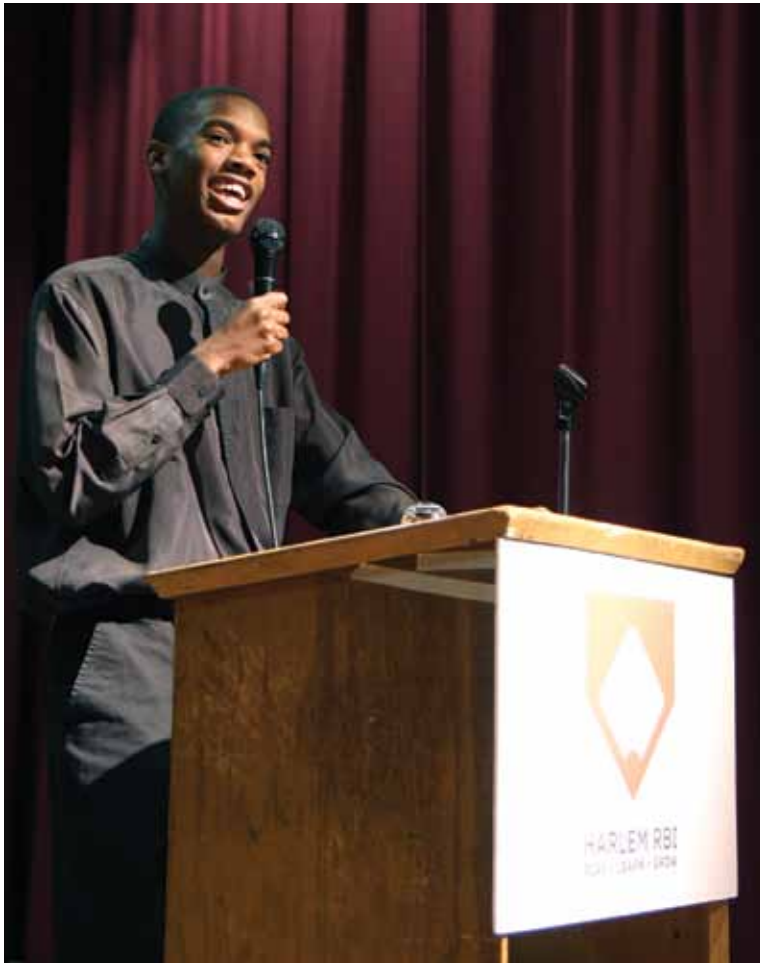
DREAMLIST

Harlem RBI graduates will be:

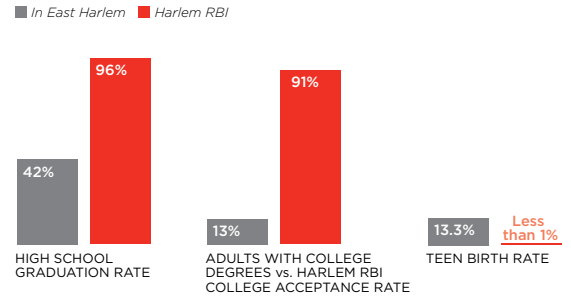
- PHYSICALLY HEALTHY
- CONFIDENT, COMPETENT AND CARING
- ACTIVE CITIZENS
- WORK-READY
- HIGH SCHOOL GRADUATES WHO MATRICULATE TO COLLEGE
- TEAMMATES, FRIENDS AND FAMILY

HARLEM RBI SENIORS: MODEL CITIZENS

Harlem RBI has high expectations for its youth. The DreamList (above) is a set of attributes that our youth are expected to embody by the time they finish the program. During their final year, youth participate in business skills classes and many return to the Harlem RBI community to work as REAL Kids coaches. Harlem RBI's program does not finish for youth at graduation, the organization is expanding services for alumni to support them as they transition through college and into the workforce. Since 2005, 91% of Harlem RBI youth who have matriculated to college have either graduated or are still enrolled. Harlem RBI wishes its 2009 seniors the best of luck as they continue their education.



HARLEM RBI 2004 - 2009 SUCCESS STATISTICS



CONGRATULATIONS HARLEM RBI 2009 GRADUATES

- CLEMENT BUTLER
Borough of Manhattan Community College
- ERIK COLBOURNE
Herkimer County Community College
- CAROLINE GONZALEZ
Borough of Manhattan Community College
- CHANTELL LOVE
Herkimer County Community College
- ARIELLE MARRERO
Wood Tobe Coburn School
- BRANDY MARTINEZ
Hostos Community College
- MICHAEL MONTES
Borough of Manhattan Community College
- STEPHANIE MOODY
LaGuardia Community College
- MICHAEL PARHAM
Herkimer County Community College
- VANESSA RAMIREZ
John Jay College
- DANIEL RAMOS
Sullivan County Community College
- VALERIE SALAS
Northampton Community College
- JONATHAN SANTIAGO
Sullivan County Community College
- JESLYNE SANTOS
Albertus Magnus College
- MEGHAN SCOTT
Tompkins Cortland Community College
- MILLICENT SOTO
SUNY New Paltz
- HERMINIA THABET
Iona College
- MARIAH WILLIAMS
University of Hartford

YEAR 1 AT DREAM

Harlem RBI's DREAM Charter School opened its doors in September 2008, with 50 first graders and 50 kindergarteners. Over the past year, the school has successfully engaged families and implemented a new curriculum for both teachers and students. Fifty new kindergarteners joined the student body in 2009, and the school will continue to grow by one grade each year until it reaches capacity with 450 students, grades K-8.

EDUCATIONAL APPROACH

DREAM Charter School's mission is to educate East Harlem children through a comprehensive program that builds a community of passionate, lifelong learners. The school's holistic curriculum promotes physical, social, emotional and moral growth in a nurturing environment. To align with this vision, DREAM initiated the DREAM Family Action Council which meets monthly to provide a forum for parents and staff to discuss relevant issues and plans for upcoming community events. DREAM also hosts family-teacher conferences, potluck dinners and encourages families to attend its daily community breakfast with the school's teachers and staff.

In the classroom, students benefit from a co-teaching model that provides support for children with learning disabilities and English language learners. An often heard criticism of charter schools is that they lack sufficient services for students with special needs. DREAM Charter School has implemented a "Child Study Team" that has helped integrate its special needs students into their General Education classrooms.

A healthy mind and body is also a top priority for the school, which integrates nutrition, counseling and psychological services into its daily lessons. DREAM's partnerships with the National Dance Institute and FreeArts NYC allow students to explore their creativity and expression while improving their physical health.



SPOTLIGHT

MORE HOURS, MORE LEARNING

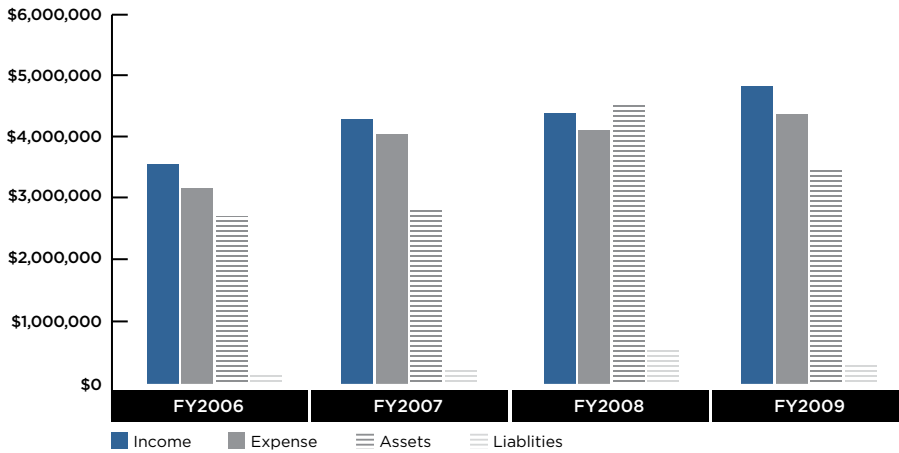
DREAM Charter School employs an extended-day and extended-year model to maximize instructional hours and student performance. DREAM students attend school throughout the year for 207 days, compared to only 186 days in New York City public schools. Classes run 8:30am-4:00pm, Monday through Thursday, with early dismissal on Fridays at 3:00pm.

This past summer, all students participated in Oasis, a six-week enrichment program designed to keep kids active and learning during the summer months when many students often regress. In FY2010, DREAM's second graders begin the integration into Harlem RBI's nationally recognized REAL Kids Summer and Afterschool Program that focuses on improving literacy and physical health.



HARLEM RBI FINANCE REPORT

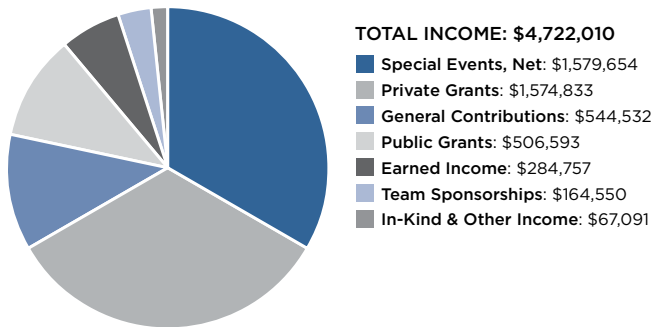
HARLEM RBI INCOME, EXPENSE, ASSETS AND LIABILITY BY YEAR • FY2006 - FY2009



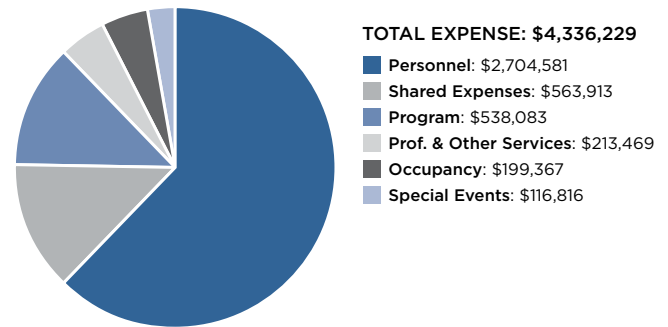
	HRBI FY2008	HRBI FY2009	% Change
Income	\$ 4,369,123	\$ 4,722,010	7%
Expenses	4,069,371	4,336,229	7%
Assets	4,536,646	3,556,756	(25%)
Liabilities	563,593	333,265	(69%)

PLEASE NOTE: In 2008, Harlem RBI changed its fiscal year from January 1 - December 31 to July 1 - June 30. In order to compare a full year, the numbers for the second half of 2008 are counted in both FY2008 (Jan 1, 2008 - Dec 31, 2008) and FY2009 (July 1, 2008 - June 30, 2009).

HARLEM RBI INCOME ANALYSIS • FY2009



HARLEM RBI EXPENSE ANALYSIS • FY2009



Your Dollars At Work: Harlem RBI allocates 81% of its expenses toward direct programs for East Harlem families.

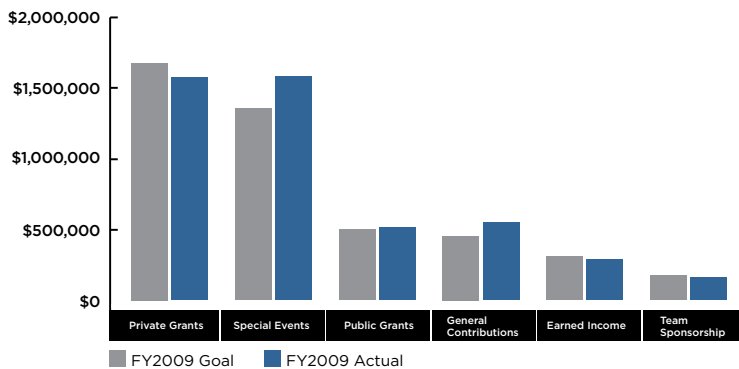
HARLEM RBI DEVELOPMENT REPORT

2009 ACHIEVEMENTS

In FY2009, total operational revenue increased by 24% — to more than \$5.7 million — thanks to the growth of Harlem RBI’s special events income. Notable successes include:

- Bids for Kids raised a record \$1.57 million
- Year-End Mailing raised more than \$220,000, an almost \$100,000 increase from the previous year
- The Harlem RBI Board of Directors stepped up its collective giving from \$376,180 in the last full fiscal year to \$791,100 in fiscal year 2009.

HARLEM RBI FY09 GOALS VS ACTUAL FUNDS RAISED



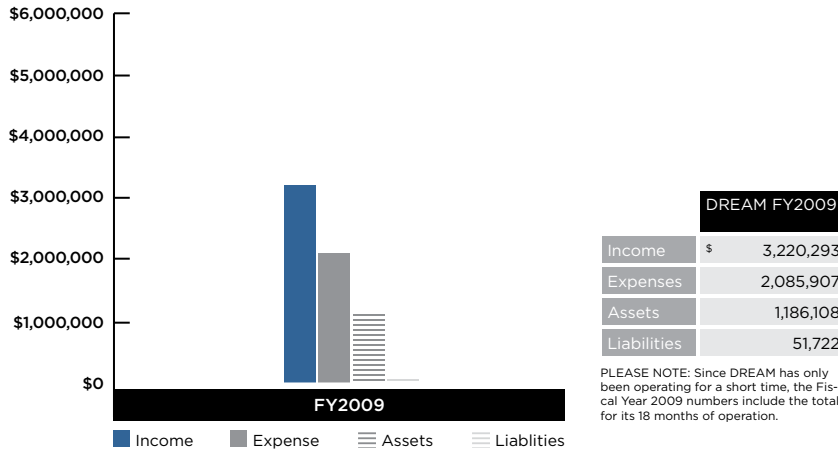
SPOTLIGHT CAPITAL CAMPAIGN

Harlem RBI and DREAM Charter School’s capital campaign has been officially kicked off with its first \$1 million donation. Stay tuned for more details.

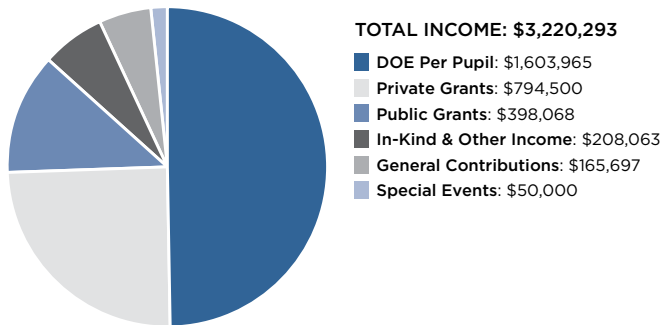


DREAM CHARTER SCHOOL FINANCE REPORT

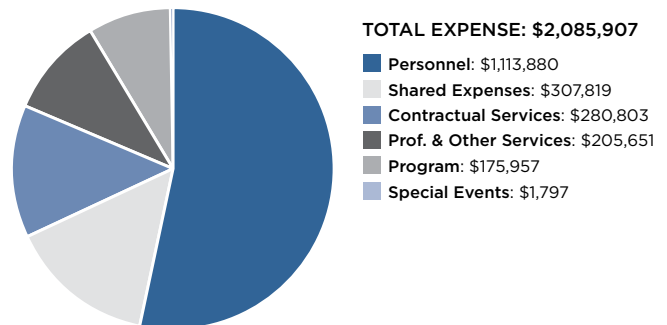
DREAM CHARTER SCHOOL INCOME, EXPENSE, ASSETS AND LIABILITY BY YEAR • FY2009



DREAM CHARTER SCHOOL INCOME ANALYSIS • FY2009



DREAM CHARTER SCHOOL EXPENSE ANALYSIS • FY2009



Your Dollars At Work: DREAM Charter School allocates 80% of its expenses toward direct programs for East Harlem families.

HARLEM RBI AND DREAM CHARTER SCHOOL

FY 2010 PROJECTIONS

INCOME AND EXPENSE BY TYPE

	HRBI 2010 BUDGET	DREAM 2010 BUDGET	COMBINED 2010 BUDGET
INCOME			
Per Pupil Funding (for DREAM)	\$ —	\$ 2,341,882	\$ 2,341,882
Private Grants	1,588,125	330,000	1,918,125
Special Events, Net	1,395,000	50,000	1,445,000
Public Grants	1,029,499	238,860	1,268,359
General Contributions	519,900	75,000	591,900
Earned Income	379,000	—	379,000
Team Sponsorships (for Harlem RBI)	207,500	—	207,500
In-Kind & Other Income	10,000	7,500	17,500*
TOTAL INCOME	\$ 5,126,024	\$ 3,043,242	\$ 8,169,266
EXPENSE			
Personnel	\$ 3,317,160	\$ 1,718,043	\$ 5,035,203
Program	818,266	262,180	1,080,446
Professional & Other Services	170,635	483,000	653,635
Shared Expenses	356,611	205,490	562,101
Special Events	353,333	—	353,333
Occupancy/Maintenance	204,254	79,000	283,254
TOTAL EXPENSE	\$ 5,220,259	\$ 2,747,713	\$ 7,967,972

* PLEASE NOTE: Harlem RBI does not budget for in-kind services. The number will be adjusted at the end of the fiscal year.

HARLEM RBI AND DREAM CHARTER SCHOOL 2009 SUPPORTERS*

\$100,000 AND ABOVE

Altman Foundation
BGC Partners
Bank of America
Booth Ferris Foundation
Cantor Fitzgerald
Capital One
The Clark Foundation
Peter & Miriam Daneker
Stuart & Elise Fraser
Daniel Healy
R & H Healy Family Foundation
New York City Charter School Center
New York City Department of Youth and Community Development
New York State Juvenile Justice and Delinquency Prevention Act
The Pinkerton Foundation
Robin Hood
Samberg Family Foundation
Starr International Foundation

\$50,000 - \$99,999

Carlos & Jessica Beltran
Carnegie Corporation of New York
Centerbridge Partners
David & Michele Joerg
New York Mets Foundation
New York State - Education Department
Nicholas B. Ottaway Foundation, Inc.
Robert & Elizabeth Sheehan
The Tiger Foundation

\$25,000 - 49,999

CKEW Foundation
Francis and Edwin Cummings Foundation
DirecTV
Fried Frank
Glenview Capital Management
Charles Hayden Foundation
Higher Education Services Corporation
Kensington Publishing
KPMG
Theodore Luce Charitable Trust
Major League Baseball
National Basketball Association
The New York Yankees
Pro Financial Services Inc.
Jeff & Debbie Samberg
John Scotti
Select Equity Group
Abbey Kissel Starr Charitable Trust
Jamie B.W. Stecher and
The Stecher Family Foundation
The Teagle Foundation
The Systems Group
Two Sigma Investments
Steve Zacharius
Walter Zacharius

\$10,000 - 24,999

5th & Ocean Clothing
Allen & Company
Balyasny Asset Management
bioMerieux, Inc.
Boston Red Sox Foundation
Timothy J. Brosnan
Michael Buckley
Cartier
CB Richard Ellis

Joan Ganz Cooney & Peter G. Peterson
Davis Polk & Wardwell
Debevoise & Plimpton
ESPN
Fox Sports Net
Franklin Sports, Inc.
Bernard F. & Alva B. Gimbel Foundation
Glenview Capital
Grey NYC
Stella & Charles Guttman Foundation
HCC Specialty Underwriters
The Hyde & Watson Foundation
IMG Worldwide
InterContinental Hotels Group
Keefe, Bruyette & Woods
Christopher & Kathryn Leonard
Thomas & Amanda Lister
L'Occitane Inc.
Louisville Slugger

Major League Baseball
Advanced Media, LP
Major League Gaming
Mastercard
Kirk & Rebecca McKeown
MDI
Michael Page International
Modell's Sporting Goods
National Hockey League
New Era Cap Company
New York City Center for Charter School Excellence
NFL Charities

Nike
Oakland Athletics
OpSec Security
Proskauer Rose
The Pumpkin Foundation
R.W. Pressprich & Co.
Rawlings Sporting Goods Company
Rogers SportsNet
Kenneth & Merideth Rosh

Helena Rubinstein Foundation
David Shapiro & Abigail Pogrebin
Skadden, Arps, Slate, Meagher & Flom LLP
Skyline Steel, LLC
David A. Sobotka
Sprague Educational & Charitable Foundation
State Farm Mutual Automobile Insurance Company
Stroock, Stroock & Lavan
Taco Bell

Take Two Interactive
Team Beans
Team Scotti
The Altschul Foundation
The Eisner Foundation
Topps Trading Cards
Twins Enterprise
VF Imagewear
Wachtell, Lipton, Rosen & Katz
Arleen West
Wilson Sporting Goods
Zeldin Family Foundation

\$5,000 - 9,999

Baker & Hostetler LLP

Baker & McKenzie
Bill Bartholomay Foundation
Charles C. Cahn, Jr.
Annie E. Casey Foundation
Covington & Burling LLP
Cowan, Liebowitz & Latman, PC
Neil Barsky & Joan Davidson
DBI, LLC
Dematteo Moness, LLC
The Walt Disney Company
Ramon Dominguez Jr.
Robert & Edith DuPuy
Emblem Health Services, LLC
Frank's Sport Shop
Fulbright & Jaworski
Scott & Robin Gottlieb
David & Sloan Greenspan
Herald Bank
John Hunt
Thomas Kinsock
Kramer Levin Naftalis & Frankel
L'Oreal USA
Manhattan Borough Needs
MBI, Inc.
McCann Erickson World
McKinsey & Company, Inc.
MetLife After-School Innovators
Thomas B. Michaud
Moët Hennessey USA
The Bank of New York Mellon Corp.

The New Yorker
Palladium Capital Management
Pepsi-Cola Company
Pequot Capital
Susan Butler Plum
Random House
Edward Rappa
John Rodin
Adolph & Ruth
Schnurmacher Foundation
Robert Schwenkel
Scott Shleifer
David Shook
Jay Springer
The Ferriday Fund
The Linus Foundation
Tiger Global
Turner Broadcasting
Viacom
Vista Research
W Girls NYC
Gregg A. Walker
Western Beef
Ziggy

\$1,000 - \$4,999

Roger Aaron
Abrams, Fensterman, Fensterman, Eisman, Greenberg, Formato & Einiger, LLP
All Stars Helping Kids
John Antonaccio
Aquafina
Arnold & Porter LLP
Joshua & Jackie Astrof
Atlanta Braves
BaAm Productions
BDA Inc.
Stephen Belber
Matthew Berke

Ira & Martha Berlin
Neeraj Bewtra
Adam Bloom
Bob's Stores
John & Linda Bohlsen
Tom Bollard
Joshua Brodie
Bobbi & Steven Brown
Brunswick Group
Kenneth Burns
Charles Butler
Carleon Capital Partners, LLC
Champs Sports
Eric Brian Childs
Cincinnati Reds
G. Peter Clark
Casey Close
David P. Cohen
Rick & Elizabeth Cohen
Colbert Narcisse
Coleman Research Group
Colorado Rockies
Common Cents New York
John Coyle
Creative Artists Agency
Anna Curry
Phil Danisi
Esther de Rothschild
Dentsu
Detroit Tigers
Diva Limousine Ltd.
Anthony & Elyse M. Dreyer
Arthur Dubow Foundation
F & F Productions
Abelardo & Charissa Fern&ez
Vincent Ferraro
Florida Marlins
Frederick & Froberg Design
Roy D. Fugazy
Barbara Germain
Gerson Lehrman Group
Getty Images
Alex Ginsburg
Jerrold & Marla Goldberg
Edward & Marjorie Goldberger Foundation
Goldman Sachs & Co
Stephen & Myrna Greenberg
Michael & Terry Groll
Glenn Hadden
Philip J. Hahn Foundation
Hat World, Inc.
H. Peter & Elisabeth Haveles
Herrick, Feinstein LLP
Nicola Heryet
Matthew Hoffman
Ronald B. Hollander
Image Impact
Intelsat
J. Pokoik Realty
Arthur Jacobson
Marc Jaffe
Jonathan Rose Companies
David Kelley
Rebecca Kerr & Timothy Forrester
Steve N. Keys
Seth Krauss
David & Amy Kriss
Michael Laginestra

* Listed on this and the following pages are donors whose contributions were received between July 1, 2008 and June 30, 2009. Please accept our apologies if we omitted anyone and contact Rebecca Muir via email at rmuir@harlemrbi.org.

HARLEM RBI AND DREAM CHARTER SCHOOL 2009 SUPPORTERS *Continued*

Rick Lawall
 LEJ Sports Group
 Terry Lenzner
 Veronica Leonard
 Lori Levinson
 Ann Lewis
 Mark Liscio
 Lone Pine Foundation
 Los Angeles Dodgers
 Elizabeth & Matthew Luckett
 Liu Family
 Major League Gaming
 Major League Baseball
 Players Association
 Brad Mak
 Robert Manfred
 Carl Manison
 John & Frances Mannix
 Jonathan Mariner
 Marilyn Mazur
 Ray McDaniel
 Merrill Lynch
 Metrovision Production Group
 Ken Meyerson
 Milwaukee Brewers Baseball Club LP
 Minnesota Twins
 Gregory Paull Mitchell
 Annie Moore
 Morgan, Lewis & Bockius
 Ross Moskowitz
 Mostafa Family Charitable Lead Trust
 MSI Production Services
 NEP Broadcasting
 Joseph Niciforo
 Ramona Nielsen
 Nine Sports Holdings, LLC
 Norris, McLaughlin & Marcus
 North American Membership
 Group, Inc.
 Robert & Sharon Nunes
 Connor O'Gorman
 Olympia Sports
 One Source Visual Marketing Solutions
 Ethan Orlinsky
 Eric Ottaway
 Overland Entertainment
 Paragon Marketing Group
 Parsley Family Fund
 The Partnership for After School
 Education (PASE)
 Party City
 Party Planners West Inc.
 Peter Salisbury
 Holly Peterson
 Pfizer Foundation
 Philadelphia Phillies
 Phipps Houses
 Phoenix Communications Group Inc.
 Jonathan Pokoik
 Professional Baseball
 Athletic Trainers Society
 ProSports Music Marketing LLC
 PVI
 Quad Graphics
 Rector Park
 Cal Ripken, Sr. Foundation
 Kristine Risberg
 Arturo Rodriguez
 The Rust Foundation
 SAC Capital Advisors
 San Diego Padres

Michael Satow
 Scaling Success
 John & Viola Scanlon
 Harvey Schiller
 Sanford J. Schlesinger
 Brian Schmitt
 Select Artists Associates
 Sharp Electronics Corporation
 Stephen B. Siegel
 Randy Simpson
 Sky's the Limit
 Societe Generale
 Jonathan Spalter
 Sportvision Inc.
 Joseph & Lizbeth Stecher
 Geraldine Stein
 Sterling National Bank
 Jane Stire
 Tom Strohmenger
 Joe Sultan & Sandy Chilewich
 Sure Shot Transmissions
 Ronald E. Taylor
 Georgie Thomas
 William Thomas
 Tiffany & Co.
 TMC Group, LLC
 Toronto Blue Jays
 Tri-Star Construction
 Turner Sports
 Union Payroll Agency Inc
 US Trust
 W. Capital Management
 Weldon, Williams & Lick Inc.
 Mary Williamson
 Wincraft Inc.
 Wintergreen Advisors
 Robert S. Wittenstein & Lisa Berlin
 Wittenstein
 Earle Yaffa
 Steven Zacharius
\$500 - \$999
 Christian & Cherylyn Ahrens
 Eugene Avila
 Bank of Scotland
 James Bergen & DiAnne Arbour
 Richard & Kara Berlin
 Black Dog Builders
 Jonathan Brandt
 Joseph A. Calvo
 Pamela Chait
 Steven Cohen
 Eric Colandrea
 Todd Combs
 John Conway
 Maleka Covington & Stephen Lawrence
 Cowen Healthcare Royalty Partners
 Felicia Crump
 Jeff Cushman
 Mario Dell'Aera
 Deutsche Bank
 John Eisinger
 Elie Tahari
 Lisa Farley
 Mimi O'Connor Fast
 Blaine & Diane Fogg
 Chris Gallagher
 Rob Georges
 Robert Goldstein
 Golf Donors

Google
 Happy Hour/Guest Bar
 Tending Series
 Laurie Hirsch-Schulz
 Barbara Hogan
 Janus Capital Group
 Raji Kalra
 Katherine DeFoyd & Gordon Murray
 Janet & Peter Kelley
 Joshua Kirshner
 Alan Kotin
 Andrew Lacey
 Christine Lasala
 George Liu
 Linda Luca
 John & Joella Lykourazos
 Craig Marino
 Clara Markowicz
 Heather McDonald
 MediaXstream
 Stephen & Evalyn Milman
 Morgan & Elizabeth Paull Mitchell
 Terry Morris
 Nicholas Martini Foundation
 Brendan O'Rourke
 Penry & Melissa Price
 Peter & Robyn Rahbar
 Lecie & Jack Resneck
 Renee Reso
 Rose Polidoro Enterprises
 Maria Guadalupe-Sharp
 Silver Lake Technologies
 Management LLC
 Steven Silver
 Stanley Stahl Management
 Chris Tatreau
 The Northwest Company
 Charlie Trisiripisal
 Marlene Turner
 David Wachter
 Scott Wallace
 Claudia Zeldin
\$100 - \$499
 Cassandra Abodeely
 Joshua Abrams
 Kristen & Penny Alexandrov
 Alison Page
 Matthew Allen & Steven Allen
 Nora Ammar
 Randine Anderson
 Giorgia Anton

Alan & Judith Appelbaum
 Lynn Appelbaum
 Apple Bank
 Christopher & Patricia Arndt
 AXA Foundation
 Leann Balbona
 Bank of America United
 Way Campaign
 Jonathan Bard
 Philip Barr
 Jamie Bartholomay
 Harold & Laney Becker
 Henry Belber
 Jonathan & Sage Belber
 Stephen Bellwood
 Jeremy Berman
 Ana M. Bermudez
 Ann Berry
 Irving & Vivian Beyda
 Rebecca Birch
 Bruce Reid Birns
 Jennifer Blessing
 Emma Bloomberg & Chris Frissora
 Jill Blumberg
 Celia Bobrawksy
 Mark Bombara
 Peter Boritz
 Peter Boukouzis
 Wendy Brandes & Joel Kassin
 Shirley Buchman
 Richard Buery
 Audrey Buxbaum
 Robert Caliendo
 Kimberley Cambridge
 Reischea Canidate & Alex Kapsouris
 Christopher Capece
 W. Ross Cardon II
 Dennis Cardone
 Melissa Caruso
 Cauldwell Wingate
 Peter David Cavaluzzi
 George Chait
 Sidney Cherubin
 Marvin Chiddick
 Constance Christensen
 Coalition for Asian American
 Children & Families
 Susan Cockfield
 Gideon Cohen
 Richard Collins
 David Countryman
 John Couriel & Rebecca Toonkel



HARLEM RBI AND DREAM CHARTER SCHOOL 2009 SUPPORTERS *Continued*

Michael & Catherine Crane
 Aimee Crawford
 Derek & Elizabeth Cribbs
 Sarah Cullen
 Catherine Curley
 Sheldon & Bonnie Cytron
 David & Sarah Daneker
 Danielle Mays
 Keith David Davis
 Todd & Linda Davis
 Delson International
 George W. Dennis
 Victoria Ann Dennis
 Daniel DiLorenzo
 Jennifer Dryer
 Ed Duffy
 Susan Edelstein
 Ehrenkrantz Eckstut & Kuhn Architects
 Nabil El-Hage
 James & Amy Elrod
 Jens Ernberg
 Emory Evans
 Jonathan Ezer
 Susan Feinberg
 Irwin & Martha Feinstein
 Marilyn Feldman
 Debbie Fink
 David S. Finkel
 Julia Fought
 Ross Fox
 Jennie Friedman
 Lucy N. Friedman
 Gordon K. Fu
 Joyce Fu & Chad Martin
 Alice Fung
 Patricia Funk
 Gap Inc. Giving Campaign
 Paula Gavin
 Arthur & Margareta Gilman
 Dayne Carole Glover
 Terry & Virginia Glover
 Deanne & Michael Golden
 Wendy Goldman & Marcus Rediker
 Kristen GoldMansour
 Jason Goldner
 Paul Simon Goldsmith-Pinkham
 Janna Goldstein
 Josh B. Goldstein
 Ashley Goodale
 Alix Gould-Werth
 Alex Granovsky
 Corinne Marie Grealish
 Daniel R. Greenberg
 Jack & Marcia Greenberg

Julia Greenberg
 Kristen Grippi
 Christopher Grondahl
 Allan Gubbins
 Brian Gustavson
 Michelle Gutmann
 Sarah Haga & Damon Strub
 Nicole Hamel
 Jennifer Haroon
 Joseph & Carol Harpster
 Curtis Harris
 Lowell Harwood
 Craig & Ina Hasday
 Laura Hayden
 Angela Heisten
 Cathy Hemming
 Ronald Hoffman
 Elizabeth Jane Hoffman
 Irene Hong
 William & Sarah Jane Horton
 George Hur
 I Do Foundation
 IBM
 Suzanne Immerman
 Ingram Yuzek Gainen Carroll & Bertolotti, LLP
 Sandy Ip
 Irving Rosenzweig Foundation
 Benjamin Jackson
 Rob Janukowicz
 Amy Janzen
 Nancy Joerg
 Johns Hopkins University
 Joseph Leeb Enterprises, Inc.
 Donna Joseph
 Eamon Joyce
 JP Morgan Chase Foundation Matching Gift & Volunteer Programs
 Susan Kelly
 Jordan Kern
 Robert Kheel
 Rebecca Kittle
 Cynthia Kleinbaum
 Edward & Susan Kline
 Jamie & Christopher Kocis
 Lee Koenigsberg
 Barbara Kovacs
 KPMG United Way Campaign
 Stephen Kraus
 Vincent Krsulich
 John V. Kulvicki
 James Kurkowski
 Rocco Laginestra
 Su Zann Lamb
 Sara Dwyer Lane

Linda Lantieri
 Dino & Rose LaVerghetta
 Jennifer Lawrence
 Anthony Lee
 Paul & Stacey Leibowitz
 Bernard Levin
 Jane Liu
 Kevin & Leslie Lloyd
 Erin Lombardo
 Lord, Abbett & Co.
 Claire Love
 Leiha Macauley
 Robert Macrae
 Rahul & Lakshmi Magavi
 Marc Majzner
 Ernest Mak
 Angeliqye Mamby
 Zaharah Markoe
 Tiffany Marsh
 Sally D. Mason
 Teresa Mason
 Harry Mateer
 Stephen & Lea Materazzi
 Chris Matias
 Michael Paul McGown
 Patricia Meyer
 Sherrinicole Miller
 Wayne Miller
 Langdon Mitchell
 Lincoln Mitchell
 Nicola & Kathryn Mongelli
 JB Moore
 Christopher Morales
 Morgan Stanley Annual Appeal Campaign
 Judith Moskal
 Andrew Muldowney
 Eric Mulkowsky
 Anne Munson
 Peter & Michele Myers
 Scott Neff
 Kely Niles
 Cheryl Nunes
 Sean Michael O'Donnell
 Mike O'Neill
 Chuma Orakwusi
 Olumide Owoo
 Minjung Park
 Arlyn & Tom Parker
 Alan & Susan Patricof
 Muriel Peters
 Michael E. Pikiel
 Neal Pilson
 Michael & Judith Platt
 Bob Potter
 Amol & Rebecca Prasad
 Sean Prendergast
 Christine Pride
 Quadrangle Group Foundation
 Jonathan Ratner
 Jennifer Rehn
 Sheri Resnik
 Albert P. Reyes
 Sara Sandra Richburg
 Eric Lee Richmond
 Charity Robey
 Albert Robin
 Ronald Rolfe
 Armand & Lynn Roos
 Liz Rosen
 Michael & Patty Rosenblatt

Andrew Ross
 William S. Ross
 Adam Rossol
 Melissa Roth
 Bill Sample
 Dominic Santarsiere
 Michael Santora
 Rachel Sattler
 Peter Sauer
 Allison Scanlan
 Kate Scanlon
 Greg Schaefer
 Nicholas & Katherine Scharlatt
 Brian Schiele
 Carl Schlichting
 Mark Schnepf
 Kyle Schoppmann
 Lewis Schragar & Frances Marshall
 Leon & Lisa Seidman
 Robert Sellers
 Michael Semsky
 Salil Shah
 Mark Shalhoub
 Kendall Shaw
 Kate Sheehan
 Stefanie Zeldin Sigal
 Shelby Silverman
 Adam & Aimee Smith
 Julia Emma Smith
 Laurence Sorkin
 Richard & Kathryn Souto
 Leonard & Myrna Springer
 Matt & Susan Springer
 Peter & Felice St. John
 Josh Stamberg
 Susan Stamberg
 William Stampur
 Mark Stein
 Stern Tannenbaum & Bell LLP
 Robert & Jane Stine
 Murray Stoltz
 Amy Stursberg
 Kelly Sullivan
 David Sussman
 Susan Tacuri-Loor
 Nafisa Tejpar
 Carrie J. Teret
 Stephen Thompson
 Matthew Tiberio
 Dirk Tillotson
 Alyssa Tomback
 Eric Toppel
 Attila Torok
 Trevor Day School
 UBS
 United Way of New York City
 Crystal Vargas
 Philip Vehec
 Willem Verwarcke
 Anthony Verzello
 Thomas Vitiello
 Elizabeth Vogel
 Matt & Meera Wagman
 Peter Wakeman
 Jacob Wallace
 Linda & Kenny Wasserman
 Pamela Weinberg
 Eric Weingartner
 Brian Weinstein
 Shelly Wimpfheimer



HARLEM RBI AND DREAM CHARTER SCHOOL 2009 SUPPORTERS *Continued*

Peter John Wirth
 Alex Witt
 Elizabeth Wong
 Derrick Yarbrough
 Bob Yee
 Maxwell Yim
 Yorkville Sports Association
 Anthony Young
 Zog Sports, LLC
 Heather Zuckerman
\$1-\$99
 Natalie Farrar Adams
 American Express Foundation
 Spiros Antoniadis
 Julie Asher
 William Ashley
 Avin Bansal
 Jacob Bardin
 Becca Barron
 Christine Bave
 Alexandra Bellak
 Mitchell & Gail Berman
 Erin Levi Blondes
 Stanley & Nancy Bloom
 Jeff Bogan
 Tom Brasuell
 Christine Bronzi
 Tracy Burnett
 Paul & Mary Allison Callaway
 Leslie Carter Silver
 Cuauhtemoc Castillo
 Robert Chrzanowski
 Faye & Peter Coppa
 Joi Corrothers
 Noah Coslov
 Bridget Anne Crawford
 Melissa Danaczko
 James D. Denis
 Maria Diaz Velasquez
 Michelle Donaldson
 Richard & Joan Druckman
 Rosanne Druckman
 Katie M. Dunne
 Mira Edmonds
 Lindsey Royce Ehrenwerth
 Nadim El Gabbani
 Jennifer Elliott
 Amy Elman
 Molly McIver Emmett
 Louis & Nancy Farrar
 Dana S. Fechner
 Lauren Feder
 Alix Feinkind
 Franklin Templeton Investments
 Kenneth & Randy Freeman
 Julie A. Fuller
 Lauren Gabel
 Caitie Galblum
 Barbara Gallant
 David Gillis
 George & Phyllis Gluck
 Joe Gomes
 Milagros Gonzalez
 Benjamin Goodrich
 Elizabeth Jane Gott
 Andrew Graham
 Lawrence & Allison Green
 James Greenberg
 Marla Greenspan

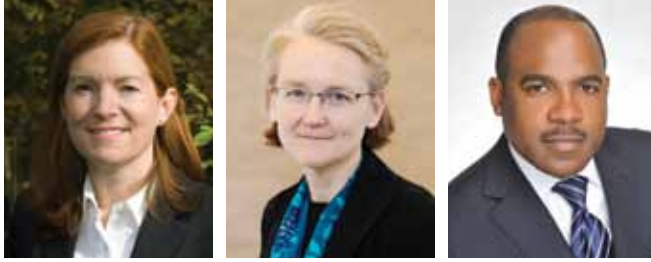
Judith Gruskay
 Joy Harris
 John & Sharon Hays
 Steve Hirsch
 Adam Hoch
 Myra Hochman
 Lisa Ingrasia
 Gladys & George Janava
 Bobby Jones
 Euriphile Joseph
 Carole Kaminsky
 Dina Kaufman
 Carmella Kedem
 Kaylie Keesling
 Chris Kelley
 Cheryl Kendall
 Katherine Kennedy
 Georgia Levenson Keohane
 Fern J. Khan
 Caroline Kim Oh
 Carole King
 Martha Whitney King
 Katherine Kirvan
 Alice B. Klaris
 Josh & Amy Klaris
 Lorin Klaris
 Nathaniel Klein
 Amy K. Knarr
 Priya Kothari
 Jared & Alanna Kotler
 Talia Sharon Krohn
 Susanah E. Kuchenbrod
 Susan Laine
 Laura S. Anker
 Aliya Leekong
 Dan Leers
 Robert Leonard
 Anthony Leone
 Richard & Barbara Lerner
 Hillary Levine
 Larry Levine
 Dr. & Mrs. Lieberman
 Jane Lin
 Essence Lirud
 Aaron J. Lohr
 Neil & Virginia Lucey
 Kathy M. Lynch
 Megan Lynch
 Linda Schechter Manley
 Priya Manocha
 Daniela Markowicz
 Andrew M. Martin
 Elisabeth Martin
 Erin Martin
 Julie Maurer
 Lisa McCann
 Maegan M. McDermott
 Patrick McEvoy
 Danie McHugh
 Andrew Jon Meade
 James Merriman
 Stuart Miller
 Lav Milutinovic
 Fred & Lisa Morgan
 Bernard Moss
 Liza Near
 Wendy Nelson
 William Winter Nesbitt
 Joseph Newman
 James & Nanette Noble

Tuhina O'Connor
 Anthony Oland
 Susan Orbach
 Adrienne O'Rourke
 Benjamin N. Osborne
 Nicholas S. Palmer
 Periconi, LLC
 Kristin Pernicano
 Ryan Pierce
 Zachary Poelma
 Robin Pogrebin & Edward Klaris
 John & Sallie Pride
 Alison Quinn
 Henry & Marcia Rabinowitz
 Judy Rachele
 Reader's Digest Foundation
 The Reed Company
 Jack Resneck Jr. & Ellen Huffbauer
 Jerome Rettig
 Byrna Rogers & Tim Schenick
 Gregg Rosenzweig
 Karen Rosner
 Dennis & Deborah Ross
 Rohit Sahni
 Antony L. Sanacory
 Terence Scally
 Christian Schmidt
 Jill & John Scibilia
 Emily Sharp
 Leonard & Sylvia Sheeskin
 Alan & Carole Simon
 Jonathan & Cornelia Small
 Lana Smorgunov
 Shelley Solomon
 Eileen & Daniel Spector
 John Spencer
 Cliff Sperber
 Robert & Carol Star
 Lauren Cohen Starr
 Andrew Strasner
 Sucherman Consulting Group, Inc.
 Kate S. Sugarman
 Clare Swanson
 Laura Swerdloff
 Aliya A. Tejpar
 Sonali D. Theisen
 Nakia Thomas
 Amy Thudium
 I. L. Uchill
 Jenny Valdez
 James & Connie Valla
 Carla Varriale
 Lenore Le Vine
 Eliq Watson
 Kimberly Wepner
 Jerome & Arleen Wiesenberg
 Marilyn Wind
 Jo Wodiska
 Deshawn Wright
 Jenny Goldstock Wright
 Jessica Zeldin
 Steven & Joanne Zuckerman
 Carlos Zuniga
IN-KIND DONORS
 Adidas
 Alfredo of Rome
 Alice's Tea Cup
 Apollo Theater
 The Art of Shaving

Baseball Hall of Fame
 BBKings
 Carlos & Jessica Beltran
 Adam Bloom
 The Brooklyn Brewery
 Timothy J. Brosnan
 Brother Jimmy's BBQ
 Capital One
 Cedar Graphics, Inc.
 Charlie Butler
 Chicago Cubs
 Chocolate Chocolates
 Cipriani
 Colbert Report
 Courtney Davidson Photography
 Cozy's Cuts for Kids
 Diane Cramer
 Detroit Tigers
 Djoniba Studio
 Ramon Dominguez Jr.
 Abraham Ehrlich & Lana Flame
 Elie Tahari
 ESPN Zone
 Fairview Country Club
 Falls Designs
 Graye T-Shirts
 Grand Hyatt Hotel
 Great Seats
 Jack and Marcia Greenberg
 Joy Habian
 Harlem Lanes
 Heartland Brewery
 Hewlett-Packard Company
 Highline Ballroom
 Irene Hayes Wadley & Smythe
 IT Cosmetics
 Jazz Standard
 Jeff Idelson
 Anu Karwa
 Katherine Pavia
 Keefe, Bruyette & Woods, Inc.
 Kensington Publishing
 KPMG
 L'Absinthe Brasserie Restaurant
 Laser Cosmetics
 L'Oreal USA Inc
 Lori Levinson
 LVMH
 Major League Baseball
 Nanette Lepore
 Nat Sherman
 National Geographic Kids
 The New York Mets
 The New York Yankees
 Next Door Nobu
 Nike
 NY Liberty
 Park 56 Dental
 Professional Golf Association
 Rainbow Room
 Random House
 Bradford Rowley
 Runner's World Magazine
 John Scotti
 Jane Smith
 The Spotted Pig
 Jessica Sobin
 Steve LaPorte
 Sweet Tater
 Teeny's Cookie Basket

BOARD OF DIRECTORS UPDATE

In July 2009, Harlem RBI welcomed Meghan Bracken, Sarah Haga and Colbert Narcisse to the Board of Directors. Meghan, from official sponsor of the National RBI program, KPMG, is a longtime friend of Harlem RBI. Sarah is from AECOM, a leading design and planning firm, and Colbert comes to Harlem RBI from Gold Bullion International. The Home Run Leadership Council also welcomed two new members: Bob Kerrey, President of The New School, and John Scotti, Owner of Team Scotti.



NEW HARLEM RBI BOARD MEMBERS: (from left to right) Meghan Bracken of KPMG, Sarah Haga of EDAA AECOM and Colbert Narcisse of Gold Bullion International.

BOARD REPORT CARD

	FY2007	FY2008	FY2009
Board Meeting Attendance	82%	77%	89%
% Making Financial Contributions	100%	100%	100%
Average Contribution	\$ 20,983	\$ 39,670	\$ 46,535
Median Contribution	\$ 9,050	\$ 10,400	\$ 15,025
Total Board Contribution	\$ 376,180	\$ 714,059	\$ 791,100

PLEASE NOTE: In 2008, Harlem RBI changed its fiscal year from January 1 - December 31 to July 1 - June 30. In order to compare a full year, the numbers for the second half of 2008 are counted in both FY2008 (Jan 1, 2008 - Dec 31, 2008) and FY2009 (July 1, 2008 - June 30, 2009).

HARLEM RBI BOARD OF DIRECTORS

CHAIRMAN KENNETH ROSH Fried Frank	CHARISSA FERNANDEZ The After-School Corporation	JEFF SAMBERG Acadia Woods Partners, LLC
MEGHAN BRACKEN KPMG	STUART A. FRASER Cantor Fitzgerald	ROBERT SHEEHAN Skadden, Arps, Slate, Meagher & Flom
MICHAEL BUCKLEY Brunswick Group	SARAH HAGA AECOM	JAMIE B.W. STECHER Tannenbaum, Helpert, Syracuse & Hirschtritt LLP
DAVID P. COHEN New York Mets	DANIEL M. HEALY	GREGG WALKER Sony Corporation of America
PETER DANEKER Blue Ridge Capital LLC	MICHELE JOERG Chris Leonard	CLAUDIA ZELDIN
KATHERINE DEFOYD Katherine DeFoyd Consulting	CHRIS LEONARD Alphadyne Asset Management	EXECUTIVE DIRECTOR
RAMON DOMINGUEZ Miller Brewing Co.; Harlem RBI Alumnus	GILBERT LIU Baker & McKenzie	RICHARD A. BERLIN
	COLBERT NARCISSE Gold Bullion International	

HARLEM RBI HOME RUN LEADERSHIP COUNCIL

HONORARY CHAIRMAN MARC JAFFE PixFusion LLC	FRANCIS X. FARRELL	SHARON ROBINSON Major League Baseball
BILL BARTHOLOMAY Willis Group Holdings	JIM FLANIGAN General Mills Corporation	JOHN SCOTTI Team Scotti
KEN BURNS Documentarian	KEITH HERNANDEZ New York Mets	ARLEEN WEST Parachute Properties
CHARLIE BUTLER Runner's World Magazine	JEFF IDELSON National Baseball Hall of Fame & Museum	WALTER ZACHARIUS Kensington Publishing Corporation
ROBERTO CLEMENTE, JR.	BOB KERREY The New School	
ROBERT COSTAS MLB Network	OMAR MINAYA New York Mets	

HARLEM RBI ALL-STAR COMMITTEE

STEPHEN BELLWOOD Colliers ABR	ROB GEORGES Clyde & Co. US, LLP	CHRISTINE PRIDE Random House
ADAM BLOOM Major League Gaming	JONATHAN HOLLANDER Chesapeake Advisory Group, LLC	ROBYN RAHBAR Axiom Law
REISCHEA CANDIATE ESPN	DAVID KELLEY Pressprich & Co.	ALBERTO REYES Chatham Asset Management
CHRISTOPHER CAPECE Avalon Bay Communities	REBECCA KERR AND TIMOTHY FORRESTER Pepsi Co	ADAM ROSSOL Robinson & Yablon, PC
FELICIA CRUMP National Basketball Association	MICHAEL KLEIN Maxximum Marketing	ALLISON SACKS The Lintus Foundation
ELYSE DREYER Sotheby's	KIRK AND REBECCA MCKEOWN Glenview Capital	
JOYCE FU AND CHAD MARTIN New York Mets	HEATHER MORGAN American Jewish Joint Distribution Committee	
MARIA GUADALUPE-SHARP DBI Construction Consultants		

DREAM CHARTER SCHOOL BOARD OF DIRECTORS

CHAIRMAN RICHARD A. BERLIN Harlem RBI	MICHELE JOERG Brad Mak	ERIC WEINGARTNER Robin Hood
ESTHER DE ROTHSCHILD School of the Future	BRAD MAK Kingsbrook Partners	CLAUDIA ZELDIN
JOSH GOLDSTEIN Skadden, Arps, Slate, Meagher, & Flom	NATASHIA VERAS DREAM Parent	



NOTEWORTHY NEWS

The **PBS NewsHour with Jim Lehrer** spent the summer documenting the work of Harlem RBI youth, volunteers and staff. The end result was a feature story about Harlem RBI's work and its impact on the families we serve. The story aired in September and the link to the video is now available on our homepage, www.harlemrbi.org. Please enjoy and forward to your network.



333 East 100th Street
New York, NY 10029
TEL: 212.722.1608
FAX: 212.722.1862
WWW.HARLEMRBI.ORG

